

Central Management for HP ProtectTools

Endpoint Protection for Access,
Data and Communications



DATA PROTECTION • REMOTE ACCESS • SECURE COMMUNICATIONS • STRONG AUTHENTICATION • ACCESS RECOVERY • SINGLE SIGN-ON

Today's Challenge: Making Security and Compliance Affordable

The stakes and costs involved in security and compliance risks are rising dramatically. Digital information, mobile workforce and a growing number of regulations increase the potential compliance liability and the business losses that security breaches may cause. IT Departments must deploy strong measures for access management, data protection and secure communications.

However, many security solutions create expensive IT management challenges. IT has to manage multiple, independent, complex and expensive systems, which drive up deployment and maintenance costs. End users are left with a fragmented and difficult experience, which in turn translates into high volumes of helpdesk calls.

The Solution: Central Management for HP ProtectTools

DigitalPersona Pro is the central management solution for HP ProtectTools to remotely control Access Management, Data Protection and Secure Communications for the entire organization. Small businesses and enterprises can now make security and compliance more affordable while achieving efficiency in business processes.

Central Management for Endpoint Protection

Small businesses and enterprises can now control and enforce multiple security applications through a single control point. Solutions include Strong Authentication, Single Sign-On, Secure VPN, Fast Kiosk Access, Full Disk Encryption, Access Recovery, and Secure Email and Documents.

Best Value

Cost effective with a higher Return on Investment (ROI) and lower Total Cost of Ownership (TCO). Central Management for HP ProtectTools can help organizations save as much as 60% over comparable, industry-standard solutions.

Easy to Manage and to Use

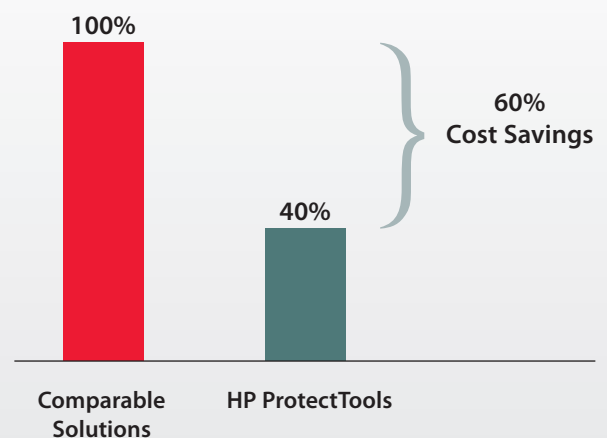
Central Management for HP ProtectTools makes endpoint security easy to manage for IT Managers and easy to use for end users. This results in a lower administrative burden, easier management and lower support costs.

Proven, Widely Available

DigitalPersona is Hewlett-Packard's proud partner for centrally-managed security. DigitalPersona Pro can now centrally manage HP ProtectTools, the security suite preloaded by Hewlett-Packard on millions of business notebooks and desktops.

The Cost of Endpoint Protection

For Access Management, Data Protection and Secure Communications, first year.



One Solution For Many Security Needs

Central Management for HP ProtectTools powers solutions for multiple security needs.

Whether you are looking at a comprehensive suite that solves many problems at once, or you are looking for a specific application, Central Management for HP ProtectTools can help you achieve your business goals.

"DigitalPersona's solution reduces the risk of unauthorized access that could result in millions of dollars of fraudulent activity."

Troy Appling

Vice President, The Banker's Bank



Data Protection

Protect customer data and intellectual property with full disk encryption.



Access Recovery

Recover access to computers when legitimate users are locked out.



Remote Access

Secure access to the corporate network with multi-factor authentication for VPN.



Compliance

Achieve and prove compliance with PCI, SOX, HIPAA and other regulations.



Secure Communications

Share information safely with signature and encryption for email and documents.



Fast Access

Improve productivity on shared computers or kiosks.



Strong Authentication

Know for sure WHO did WHAT, WHEN with multi-credential strong authentication.



Single Sign-On

Reduce Help Desk calls while strengthening access control and compliance.

Flexible Management

Organizations can choose the management option that best meets their needs and requirements.

- **DigitalPersona Pro Workgroup** is the self-contained solution for SMBs or Departments that require no IT infrastructure.

- **DigitalPersona Pro Enterprise** helps larger organizations that want to fully leverage Active Directory for maximum scalability.

As the business grows and needs evolve, you can add additional modules or applications and fully leverage your investment.

"DigitalPersona solution's integration with Active Directory has enabled us to strengthen the Telmex security infrastructure."

Javier Barajas Gonzalez

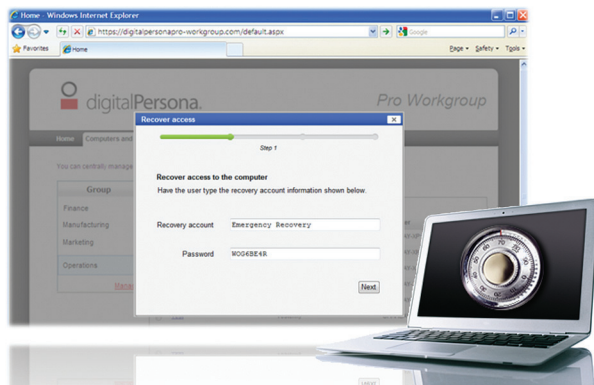
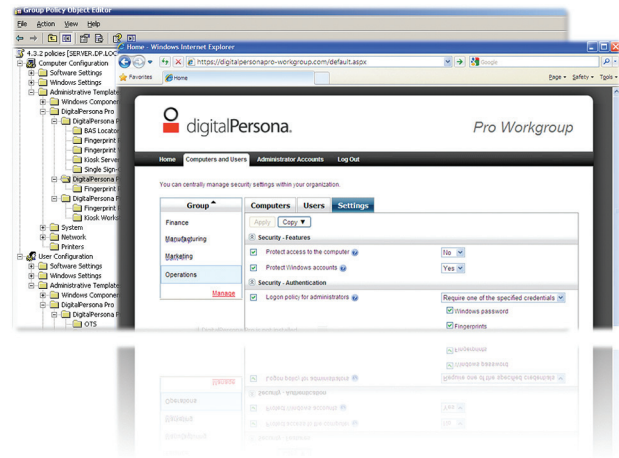
Chief Information Security Officer, Telmex

Making Security Simple to Manage and Easy to Use

DigitalPersona brings you industry-leading ease of management and use to allow for higher return on investment and improved adoption within the organization.

Save money and simplify management – Flexible deployment

Central Management for HP ProtectTools reduces the costs and complexities of managing security and authentication. You can choose between a totally self-contained solution or Active Directory-based management for maximum integration with your environment. In a few clicks, you can set up policies that include full disk encryption, multi-factor authentication for VPN access and more.



Never lose control – Access recovery

With Central Management for HP ProtectTools, you can recover from emergencies – such as users that forget their passwords when their computers are locked with full disk encryption. IT managers can now provide one-time access codes to allow users to gain access to their Windows account, even when they are on the road and without a network connection. Access recovery can extend from pre-boot (BIOS) level security and full disk encryption to Windows.

Always know who did what, when – Strong authentication

With Central Management for HP ProtectTools you can enforce users to verify their identity with a combination of password, smart cards, fingerprints, face recognition, tokens and smart phones. Depending on the balance between security and convenience that best meets your needs, you can leverage multi-credential authentication to improve security and compliance, improve user convenience and reduce support costs.

