



UNIVERSAL PRINT DRIVER

PRINT ON

YOUR TERMS

The HP Universal Print Driver helps reduce the management headaches and associated costs of multiple print drivers. One versatile fleet driver solution provides both traditional and mobile workers a consistent user experience. Use the tools in the HP UPD Printer Administrator's Resource Kit to streamline IT tasks, implement printing policies, and optimize your unique imaging and printing environment.

The world is changing

Today's work environment is profoundly different from even a few years ago. While some office professionals still have traditional, permanent workspaces, a significant portion of the workforce is mobile. Regardless of location, workers require quick access to their applications, data, and the web, and in order to keep their workflows running smoothly, they must be able to print anytime and anywhere.

In an increasingly competitive world, enterprises need tools to help them meet important business objectives. More than ever, companies are asking their IT teams to broadly implement print policies that cut costs, improve security, and meet environmental initiatives.

And finally, businesses expect world-class productivity at the best cost. Your IT team is required to efficiently migrate to new printing devices, implement new technologies, update operating systems, virtualize environments, control security, and more. You're looking for smart solutions that can take cost out while delivering exceptional end-user effectiveness.

A proven solution helps you get more done

Since 2006, thousands of businesses and millions of users worldwide have switched to the HP Universal Print Driver (UPD) to make printing easier across a changing landscape. HP UPD provides one fleet driver for both traditional and mobile users, and offers exceptional ease of use. With just one versatile driver to manage, you can optimize your imaging and printing investment. The tools in the Printer Administrator's Resource Kit (PARK) help you efficiently implement business-driven policies. Use new Secure Encrypted Print to enhance security in wired and wireless environments.

This valuable solution is available to HP customers at no additional fee—download now at www.hp.com/go/upd.



Use the versatile HP UPD solution to optimize your printing environment

The HP UPD is an intelligent print driver that was designed to give you control of how to best deploy it in your environment. It can be configured to meet your unique needs:

- **Print server**—If you want to preserve your existing server infrastructure, deploy the HP UPD via print server and give IT more control via print cues and print job management.
- **Direct IP**—Alternatively, set up the HP UPD using direct IP and reduce the cost associated with supporting print servers.

In either configuration you can choose the PDL that supports your printing needs—the HP UPD is available in PCL6, PCL5, and HP postscript (PS) emulation. The solution supports current Windows client and server operating systems (32-bit and 64-bit) as well as Novell and Citrix.

Choose Traditional Mode, Dynamic Mode—or both at once

Users of the HP Universal Print Driver can count on exceptional ease of use, whether they work in a traditional print infrastructure or need a simple way to connect with printers in a changing environment:

- **Traditional Mode** is highly suited for print server deployments. It's perfect for office professionals at a traditional desktop location printing to specific printers, who experience the HP UPD as a classic Windows® print driver.
- **Dynamic Mode** utilizes direct IP printing and is great when users work from various locations within your business. Mobile users can self-sufficiently search for, discover, and connect to printers and MFPs near their location—or they can enter a printer name or address and print anywhere on the network.
- **Combined modes**—Traditional Mode and Dynamic Mode can be used on the same PC, depending on the user's needs at the time, with no additional software to install. This flexible, single driver allows users to print what they want no matter where they are.

However users experience the HP UPD, they can count on an intuitive, easy-to-use interface that enables advanced device functionality on every printing and imaging device it connects to.

IMPROVE USER PRODUCTIVITY AND CUT HELP DESK ACTIVITY

Maximize your imaging and printing investment. Users are more self-sufficient when the HP UPD is properly deployed, reducing the need for help desk calls. Even across the most diverse environments, you can support a wide range of users with the HP UPD's easy-to-use interface.



Feature	Benefit
Familiar look and feel	The HP UPD provides a consistent interface across a variety of HP printers, reducing the need for training and support.
Versatile support for desktop or mobile use	Users can use the HP UPD in Traditional Mode when they stay in one location, or in Dynamic mode when they're on the road or need to search for a new printer. It's easy to discover and install new printers when users are on-the-go.
Real-time job and device information	The HP UPD's real-time, graphical interface empowers users to resolve common problems themselves. This can mean fewer help desk calls, faster problem resolution, improved printer uptime, and increased productivity.
Advanced device functionality	The HP UPD enables advanced functions on all the printers it supports, from two-sided printing and stapling to color themes.
Robust security	Print private documents with PIN printing—and for added security, choose end-to-end Secure Encrypted Print from Windows clients to your HP FutureSmart fleet.

GIVE YOUR IT DEPARTMENT GREATER CONTROL AND MORE EFFECTIVENESS

Empower IT by dramatically reducing the number of drivers they have to manage—and by giving them the tools they need to improve efficiency. The HP Universal Print Driver's management features can significantly cut costs.



Feature	Benefit
Efficient support and deployment	With just one driver to configure, it's easy for IT to migrate to new devices, implement new technologies, update operating systems, certify devices, and simulate environments.
Full compatibility with HP WJA	The HP UPD integrates with HP Web Jetadmin (WJA) to allow you to create print queues and update drivers on remote systems from one location. Printer lists defined in HP Web Jetadmin make it easy for users to browse to the nearest printer with the HP UPD.
Broad compatibility	Most HP and many non-HP printing devices are compatible with the HP UPD. It can be deployed via print server or direct IP. The HP UPD is available in PCL5, PCL6, and PS, and supports current Windows client and server operating systems (32-bit and 64-bit) as well as Novell and Citrix.
Global localization	Ideal for a mobile and worldwide workforce, the HP Universal Print Driver is available in 35 languages.



VALUABLE TOOLS TO BETTER MANAGE YOUR ENVIRONMENT

Set printing policies to reduce costs and paper usage

Expand the capability and usefulness of the HP Universal Print Driver with the Printer Administrator's Resource Kit (PARK)—a suite of fleet-management tools designed to work seamlessly with the driver. These tools help you customize the way you install, deploy, configure, and manage the HP UPD solution. IT managers can easily set printer policies across the enterprise. Save paper and control costs by applying duplex printing as the default driver setting, or by assigning color access by user, application, or time of day on HP Color LaserJet printers and MFPs.

This powerful suite of solutions offers robust and comprehensive policy-management capabilities for controlling discovery and implementing printing policies—and best of all, they are available at no extra cost. PARK collects all of these tools, scripts, and documentation in a single download package—see the **Documentation** tab at www.hp.com/go/upd.

Feature	Tool	Benefit
Driver settings	Driver Configuration Utility (DCU)	Pre-configure driver settings and shortcuts before installing the HP UPD on users' computers. You can set defaults for nearly every feature and can lock certain features. Easily push settings such as "Duplex on" across the enterprise.
Installation	Driver Deployment Utility (DDU)	Create an installation package with pre-configured driver settings to distribute to end-users via your standard software distribution methods. The DDU copies the driver files to the Windows driver store, and for network packages, installs the printer driver.
Policies	Managed Print Administration (MPA)	Create a customized print environment that groups users with similar requirements and defines which printers they can access. You can control user access to settings like color and job storage—for example, set the driver to automatically print emails in black-and-white.
	Active Directory Templates	If you're currently using Active Directory Service, AD templates make it easy to implement print policies, such as color access by application, user group, or time of day.
Managed printer lists and maps	Managed Print Administration (MPA)	Create customized printer lists or printer maps to help users locate printers. Managed Printer Lists (MPLs) group printers by location, department, printer type, or features (color or advanced finishing). Clickable image maps display these groupings graphically.

NEW

SECURE ENCRYPTED PRINT

Help to protect prints with PIN printing or Secure Encrypted Print

Need to print sensitive documents? The HP UPD is the first fleet driver to provide true symmetric AES256 print job encryption and decryption from the client to the page based on a user defined password¹ using a FIPS 140 validated cryptographic module from Microsoft®. Both the key and the job are stored encrypted on the printer with HP FutureSmart until they are released by the user. (For more details, see <http://csrc.nist.gov/groups/STM/cmvp/documents/140-1/1401val2007.htm#825>.)

It's simple to use Secure Encrypted Print:

1. At your Windows client, open the document and select **Print**. Go to the **Job Storage** tab, select **Encrypted Job (with password)**, enter a unique password, and click **OK**.
2. The HP UPD encrypts both the key and the job before sending it to the printer with HP FutureSmart, where it is stored.
3. At the printer, select your job, enter the unique password you created earlier, and select **Print**.

Security features help safeguard documents

Need to keep your information private? Choose Secure Encrypted Print or PIN Printing.

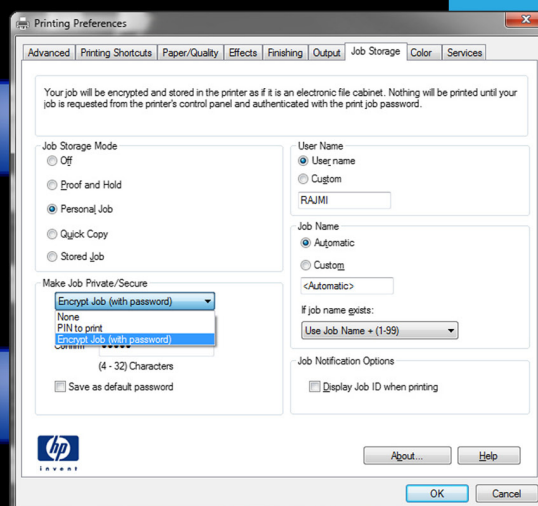
Under the **Job Storage** tab, select **Encrypt Job**, enter a unique password, and print.



-OR-



Under the **Job Storage** tab, select **PIN to Print**, enter a 4-digit PIN, and print.



The HP UPD encrypts both the key and the job and stores them on the printer.



At the printer, select your print job, enter the unique password or PIN you created earlier, and select **Print**.

The HP UPD sends both the PIN and the job to be stored on the printer.



¹ Based on the manufacturers' published product specifications.

The HP Universal Print Driver is an industry-leading² fleet driver solution that eliminates the need for separate print drivers and dramatically simplifies printing management. The HP UPD can be deployed in a wide variety of ways, providing the versatility to meet your specific needs.

Here's an example of how the HP UPD can help control costs, improve IT and system efficiencies, and streamline workflows.

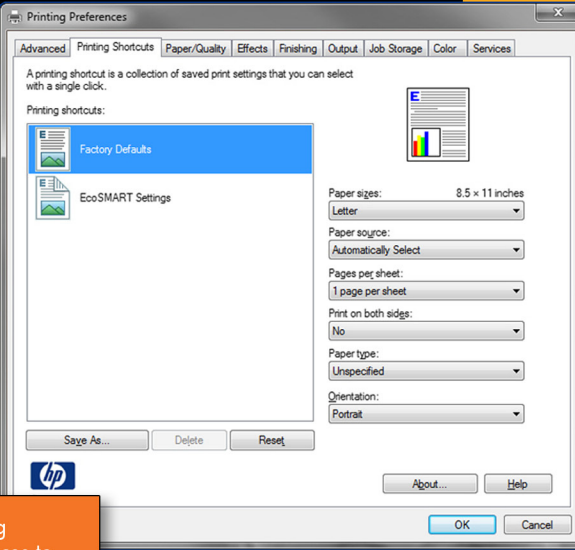
Situation: A large global enterprise, the XYZ Corporation has more than 20,000 employees across multiple campuses, many of whom are often on the road. Their chaotic print ecosystem includes 75 model-specific print drivers, 3,500 print queues, three to four print drivers per user, and 85 print servers. A lack of global policies along with inconsistent user interfaces and feature sets result in unnecessary costs, redundancies, and major hassles for users and IT alike.

Solution: XYZ deploys the HP UPD in both Dynamic and Traditional Modes via direct IP connection, which allows them to eliminate print servers. IT uses the Driver Configuration Utility to pre-configure driver settings and Managed Print Administration to set print policies.

Benefits: XYZ captures real savings by removing print servers, enabling their employees to stay connected, reducing help desk calls, streamlining management processes for IT, and implementing green policies.

Traditional Mode for users in one location

At your desk? Simply hit print and enjoy familiar print processes.



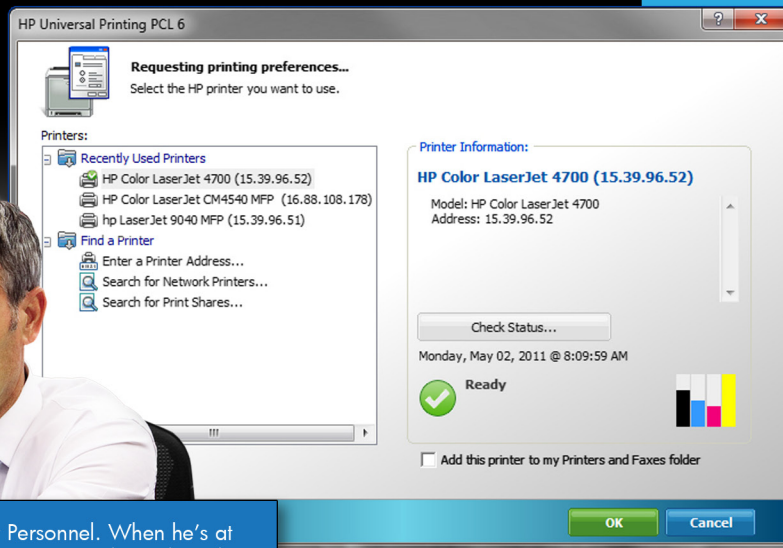
Jane works in the XYZ Accounting Department. She only prints invoices to one printer with special letterhead. She uses Traditional Mode and experiences the UPD interface as a classic Windows print driver.

Benefits: Users appreciate the familiar user interface and real-time, graphical device and job information, which allows them to resolve common problems themselves.

² HP provides a single driver, in both print server and direct IP modes, for more devices, PDLs, and localized languages, making the HP UPD compatible with more world-wide environments. Based on manufacturers' published product specifications.

Dynamic Mode for mobile users

Where are you today? Select the HP printer you want to use—maps and other tools help you find it.



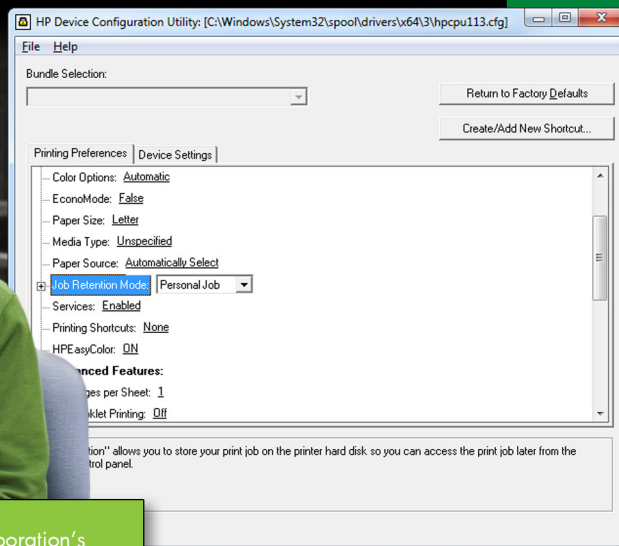
John works for Personnel. When he's at his desk, he prints via Traditional Mode. But when he travels to other XYZ campuses to make presentations, he uses the UPD in Dynamic Mode to find, install, and print to devices.

Benefits: Users are self-sufficient for everyday printing and can stay connected wherever they are. Mobile workers can see the status of the printer and supplies before selecting a printer.



Advanced management tools for IT

Need to implement new policies? Powerful tools help you customize installation, deployment, configuration, and management.



Sophia works in XYZ Corporation's IT department. She uses the Driver Configuration Utility (DCU) to pre-configure driver settings and shortcuts.

Using Managed Print Administration (MPA), Sophia implements policies to limit color printing and make two-sided printing the default. Sophia also uses MPA to create printer lists and maps so XYZ's mobile workers can find printers wherever they are.

IT benefits: streamlined driver deployments through faster queue creation and improved print stability with just a few instances of the driver to manage.

THE MOST **VERSATILE** FEATURE RICH SINGLE-DRIVER **SOLUTION**



Why HP UPD?

There are many reasons to deploy a single-driver solution throughout your organization—improved user productivity, reduced time spent on certification, diminished helpdesk activity, greater IT control, and enhanced IT efficiency. While many solutions exist, none is as flexible and feature rich as the HP Universal Print Driver.

Key areas where the HP UPD is superior to competitors³

Broad device and user support	<ul style="list-style-type: none">• HP UPD supports more printers, PDLs, and languages• HP UPD supports more deployment options and network environments• HP UPD can be used in Traditional or Dynamic mode
Policy management	<ul style="list-style-type: none">• HP is the only vendor to offer additional tools compatible with the HP UPD that allow administrators to set printer policies and customize printer lists by user or group
Bi-Di support	<ul style="list-style-type: none">• While all vendors use Bi-Di support to query for printer features, HP provides all the printer status, supplies status, and job status information in a real-time, graphical manner
Ease of use	<ul style="list-style-type: none">• HP UPD provides ONE driver suitable for both traditional and mobile users• HP UPD is among the best for providing easy-to-use printer discovery, installation, and real-time printer and supplies status in a graphical interface
Security	<ul style="list-style-type: none">• The HP UPD is the only UPD to provide true symmetric print job encryption from the client to the page based on a user-defined password

Learn more

For more information about HP UPD and how its suite of tools and capabilities can benefit your unique printing environment, visit www.hp.com/go/upd.

³ HP UPD versus Xerox, Ricoh, Konica-Minolta, Lexmark, Dell, Samsung, Kyocera, and Brother. Based on manufacturers' published product specifications and internal HP testing.

